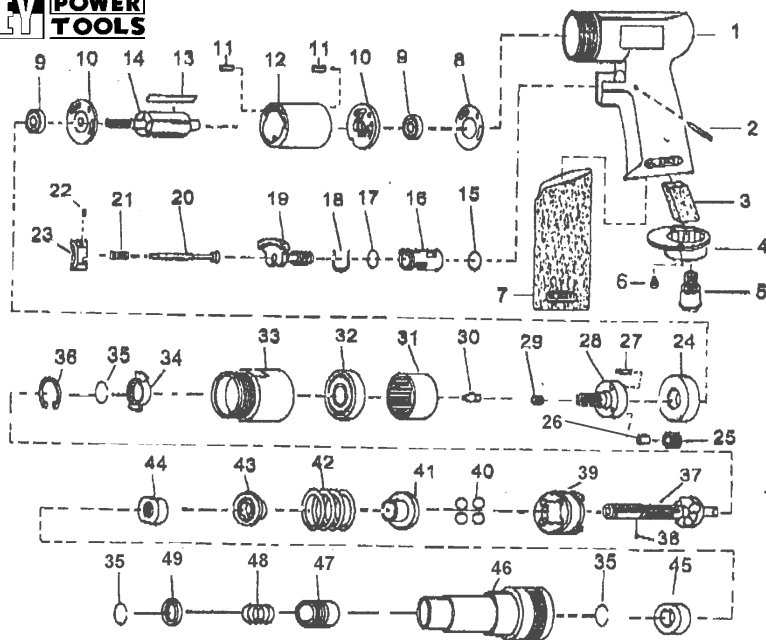


INSTRUCTIONS FOR  
**AIR PISTOL SCREWDRIVER**  
Model: **SA623**

Thank you for purchasing a Sealey Product. Manufactured to a high standard this product will, if used according to these instructions and properly maintained, give you years of trouble free performance.

**IMPORTANT:** PLEASE READ THESE INSTRUCTIONS CAREFULLY. NOTE THE SAFE OPERATIONAL REQUIREMENTS, WARNINGS AND CAUTIONS. USE THIS PRODUCT CORRECTLY AND WITH CARE FOR THE PURPOSE FOR WHICH IT IS INTENDED. FAILURE TO DO SO MAY CAUSE DAMAGE OR PERSONAL INJURY AND WILL INVALIDATE THE WARRANTY. PLEASE KEEP INSTRUCTIONS SAFE FOR FUTURE USE.



Item	Part No	Description	Item	Part No	Description
1	SA623/01	MOTOR HOUSING	26	SA623/26	BUSHING
2	SA623/02	SPRING PIN	27	SA623/27	PIN
3	SA623/03	DAMPING MATERIAL	28	SA623/28	WORK SPINDLE
4	SA623/04	EXHAUST DIFFUSER	29	SA623/29	SPRING
5	SA623/05	AIR INLET	30	SA623/30	SPRING GUIDE
6	SA623/06	SCREW	31	SA623/31	INTERNAL GEAR
7	SA623/07	RUBBER GRIP	32	SA623/32	BALL BEARING
8	SA623/08	MOTOR GASKET	33	SA623/33	CLAMP NUT
9	SA623/09	BALL BEARING	34	SA623/34	DRIVE DOG
10	SA623/10	END PLATE	35	SA623/35	RETAINING RING
11	SA623/11	SPRING PIN	36	SA623/36	RETAINING RING
12	SA623/12	CYLINDER	37	SA623/37	CAM SPINDLE
13	SA623/13	ROTOR BLADE	38	SA623/38	STEEL BALL
14	SA623/14	ROTOR	39	SA623/39	CLUTCH CARRIER
15	SA623/15	O-RING	40	SA623/40	STEEL BALL
16	SA623/16	REVERSE BUSHING	41	SA623/41	WASHER
17	SA623/17	O-RING	42	SA623/42	SPRING
18	SA623/18	REVERSE RETAINER	43	SA623/43	WASHER
19	SA623/19	REVERSE LEVER	44	SA623/44	ADJUST NUT
20	SA623/20	VALVE STEM SET	45	SA623/45	SPACER
21	SA623/21	VALVE SPRING	46	SA623/46	CLUTCH HOUSING
22	SA623/22	SET SCREW	47	SA623/47	BALL RETAINER
23	SA623/23	TRIGGER	48	SA623/48	SPRING
24	SA623/24	SPACER	49	SA623/49	WASHER
25	SA623/25	PLANET GEAR			

Original Date: 010700  
Issue Date: 010700  
Version No: 0  
Date Modified: N/A

**1. SAFETY INSTRUCTIONS**

- 3 Follow all workshop health & safety rules, regulations, and conditions when using screwdriver.
- p **WARNING!** Disconnect from air supply before changing accessories or servicing.
- 3 Maintain screwdriver in good condition and replace any damaged or worn parts. Use genuine parts only. Non-authorized parts may be dangerous and will invalidate the warranty.
- p **WARNING!** Check correct air pressure is maintained and not exceeded. We recommended 90psi.
- 3 Keep air hose away from heat, oil and sharp edges. Check air hose for wear before each use and ensure that all connections are secure.
- 3 Wear approved safety eye and ear protection.
- 3 Keep screwdriver bits clean and in good condition for best and safest performance.
- 3 Maintain correct balance and footing. Ensure the floor is not slippery and wear non-slip shoes.
- 3 Secure non stable work piece with a clamp, vice or other adequate holding device.
- 3 Ensure the screwdriver bit is secure in the chuck.
- 3 Avoid unintentional starting.
- 3 Keep children and unauthorised persons away from the working area.
- 8 DO NOT get the screwdriver wet or use in damp or wet locations.
- 8 DO NOT hold the workpiece by hand. Use clamps or a vice to secure the workpiece.
- 7 DO NOT use the screwdriver for a task it is not designed to perform.
- p **WARNING! DO NOT** use screwdriver if damaged or faulty. Contact your local service agent.
- 7 DO NOT use screwdriver unless you have been instructed in its use by a qualified person.
- 7 DO NOT drop, throw or abuse the screwdriver.
- 7 DO NOT carry the screwdriver by the air hose, or yank the hose from the air supply.
- 7 DO NOT operate screwdriver if you are tired, under the influence of alcohol, drugs or intoxicating medication.
- 7 DO NOT carry screwdriver with your hand on the power trigger in order to avoid unintentional starting.
- 7 DO NOT direct air from the air hose at yourself or others.
- 3 When not in use disconnect from air supply and store in a safe, dry, childproof location.

**2. INTRODUCTION & SPECIFICATIONS**

Fully polished finish with exhaust through handle base for reduced noise emission. Smooth air motor runs on high quality ball bearings for long life and reliability. Fully reversible drive with finger-tip control set above trigger. Fully adjustable torque between 45 and 115 ins/lb. Accepts 6mm hex driver bits. Rubber grip gives added control.

Chuck size . . . . . 1/4" - 6mm Hex  
Free speed . . . . . 1620rpm  
Torque range . . . . . 45-115In/lb  
Air consumption . . . . . 4cfm

Operating pressure . . . . . 90psi  
Air inlet size . . . . . 1/4" BSP  
Weight . . . . . 1.2kg

**NOTE:** It is our policy to continually improve products and as such we reserve the right to alter data, specifications and component parts without prior notice. **IMPORTANT:** No liability is accepted for incorrect use of this equipment. **WARRANTY:** Guarantee is 12 months from purchase date. proof of which will be required for any claim. **INFORMATION:** Call us for a copy of our latest catalogue and promotions on 01284 757525 and leave your full name and address including your postcode.

**SEALEY POWER TOOLS** Sole UK Distributor, Sealey Group, Bury St. Edmunds, Suffolk.  
01284 757500 01284 703534 E-mail: sales@sealey.co.uk

### 3. PREPARING SCREWDRIVER FOR USE

#### 3.1. Air Supply

- 3.1.1. Ensure screwdriver air valve (or trigger) is in "off" position before connecting to air supply.
- 3.1.2. You will require an air pressure of 90psi, and an air flow according to specification.
- 3.1.3. **WARNING!** Ensure the air supply is clean and does not exceed 90 psi while operating the screwdriver. Too high an air pressure and unclean air will shorten the product life due to excessive wear, and may be dangerous causing damage and/or personal injury.
- 3.1.4. Drain the air tank daily. Water in the air line will damage the screwdriver.
- 3.1.5. Clean air inlet filter weekly. Recommended hook-up procedure is shown in fig 1.
- 3.1.6. Line pressure should be increased to compensate for unusually long air hoses (over 8 metres). The minimum hose diameter should be 1/4" I.D. and fittings must have the same inside dimensions.
- 3.1.7. Keep hose away from heat, oil and sharp edges. Check hose for wear, and make certain that all connections are secure.

#### 3.2. Couplings.

Vibration may cause failure if a quick change coupling is connected directly to screwdriver. To overcome this, connect a leader hose to the screwdriver. A quick change coupling may then be used to connect the leader hose to the air line recoil hose. See fig 1 & 2.

fig 1

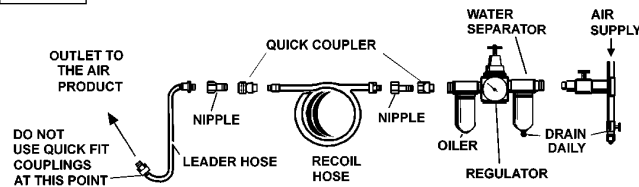
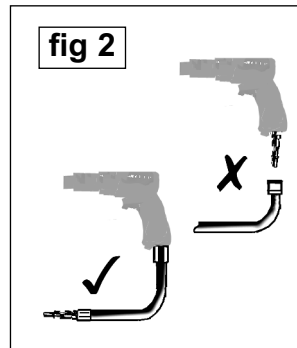


fig 2



### 4. OPERATING INSTRUCTIONS

**WARNING!** Ensure you read, understand and apply safety instructions before use.

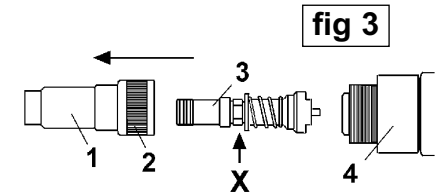
- 4.1. Push driver bit into self locking chuck. To release bit, push chuck collar forward and pull bit out.
- 4.2. Connect the screwdriver to the air hose as in chapter 3.
- 4.3. The screwdriver direction is changed by switching the reverse lever behind the trigger. Check that the screwdriver is set to operate in the required direction.
- 4.4. Depress the trigger to operate the screwdriver accordingly.

DO NOT allow screwdriver to free run for an extended period of time as this will shorten its life.

- 4.5. To change the torque.
- 4.5.1. Remove clutch housing (fig 3.1.) from main motor housing (4) by turning hand grip (2) clock-wise, to expose the cam assembly (3). Note: the clutch housing is packed with grease.
- 4.5.2. Place a wrench on nut (X) and turn to adjust torque as follows:

**INCREASE TORQUE .....by tightening nut.**  
**DECREASE TORQUE.....by loosening nut.**

- 4.5.3. Re-pack with heavy grease and re-assemble.



### 5. MAINTENANCE

**WARNING!** Disconnect screwdriver from air supply before changing accessories, servicing or performing maintenance. Replace or repair damaged parts. *Use genuine parts only. Non-authorized parts may be dangerous and will invalidate the warranty.*

- 5.1. Lubricate the air screwdriver daily with a few drops of Sealey air tool oil dripped into the air inlet to prolong its life.
- 5.2. Clean the screwdriver after use.
- 5.3. Loss of power or erratic action may be due to the following:
  - a) Excessive drain on the air line. Moisture or restriction in the air pipe. Incorrect size or type of hose connectors. To remedy check the air supply and follow instructions in chapter 3.
  - b) Grit or gum deposits in the screwdriver may also reduce performance. If your model has an air strainer (located in the area of the air inlet), remove the strainer and clean it. Flush the screwdriver out with gum solvent oil or an equal mixture of SAE No 10 oil and paraffin. Allow to dry before use.
- 5.4. For a full service contact your local Sealey service agent.
- 5.5. When not in use, disconnect from air supply, clean screwdriver and store in a safe, dry, childproof location.

### Declaration of Conformity

**CE** We, the sole importer into the UK, declare that the product listed here is in conformity with the following EEC standards and directives. The construction file for this product is held by the Manufacturer and may be inspected, by a national authority, upon request to Jack Sealey Ltd.

**Air Pistol Screwdriver**  
**Model: SA623**

98/37/EC Machinery Directive  
 93/68/EEC Marking Directive

Signed by Mark Sweetman

1st July 2000

For Jack Sealey Ltd. Sole importer into the UK of Sealey Power Tools.